

Marking-Out Guide

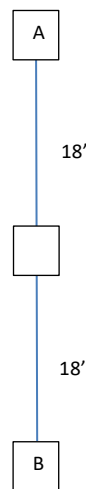
This may look like a complicated process, but it's actually quite straightforward. It's much easier with two people than one so if you need some help, please let us know.

You will need:

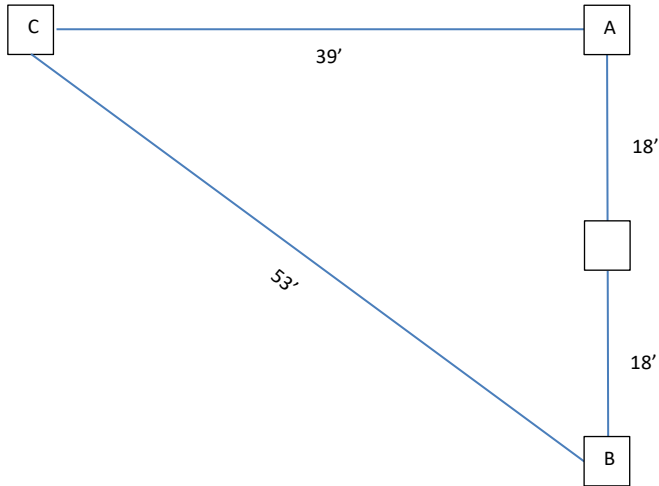
- A ball of string
- Some metal pegs

Both are stored in the shed

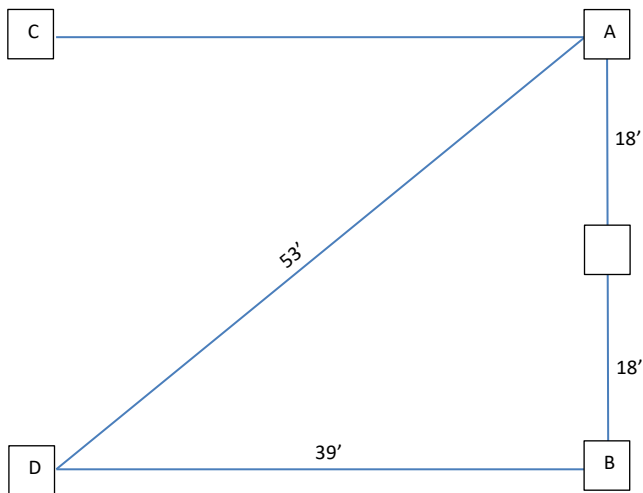
- Take a piece of string and tie it at ground level to one of the net posts (or metal retaining pins on court one if the post is not in place).
- Tie the other end to the other post or pin, making sure the string is straight, tight and touching the ground all the way across.
- Measure the string and push a metal peg into the ground at the mid-way point.
- Measure 18 feet from the centre point to each end and push pegs into the ground - the pegs are now 36 feet apart. We are going to call these pegs A and B (doesn't matter which is which!)



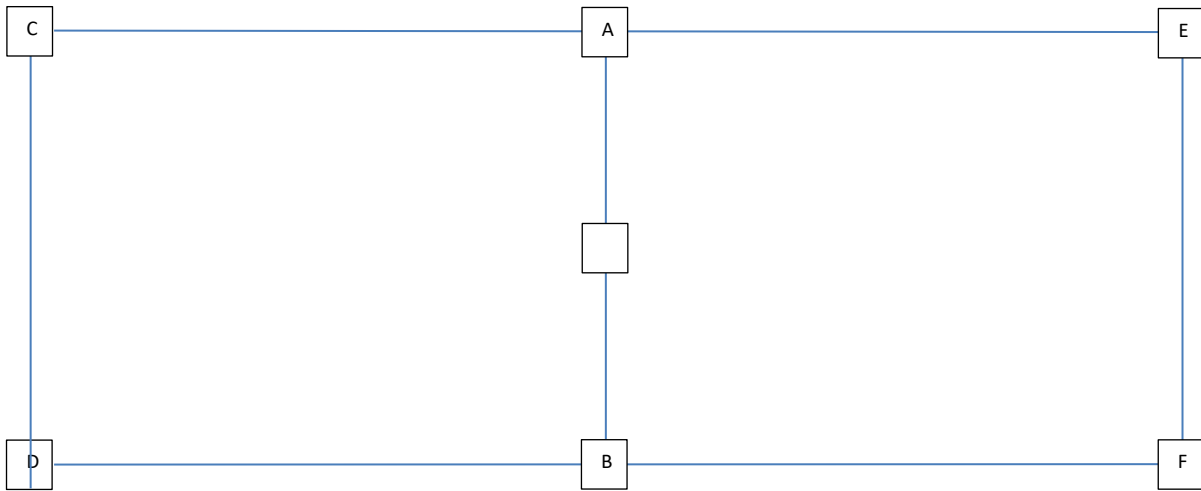
- From peg A measure exactly 39 feet at approximate right angles to the string and push a peg into the ground. We are calling this peg C. Don't worry too much about being 100% accurate, this comes later.
- Now measure from peg C to peg B. It should measure 53 feet. If it doesn't, move peg C until it does, but still measures 39 feet from peg A. Once correct, leave it in place



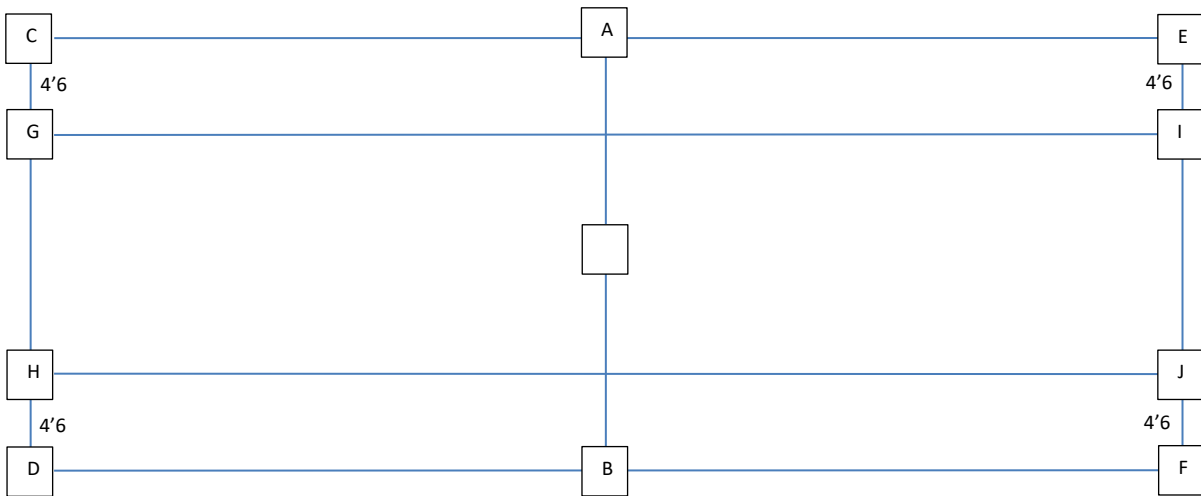
- Staying on the same side of the court, measure 39 feet from peg B at right angles to the string. Push a peg into the ground. This is peg D.



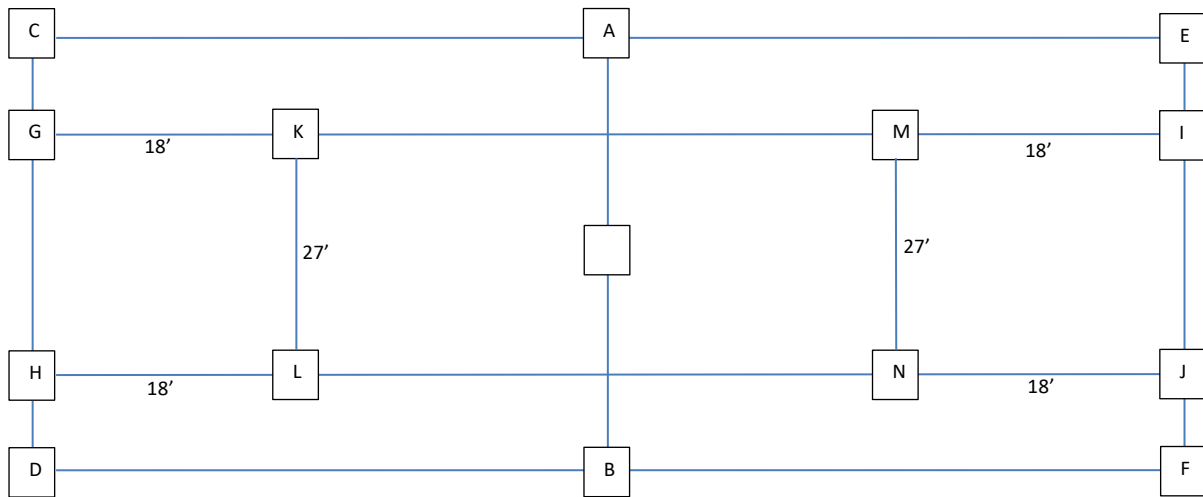
- Now measure from peg D to peg A. It should measure 53 feet. If it doesn't, move peg D until it does, but still measures 39 feet from peg B. Leave it in place.
- You now have the locations of two of the corners of the court. Repeat the process on the other side (we'll call them pegs E and F).



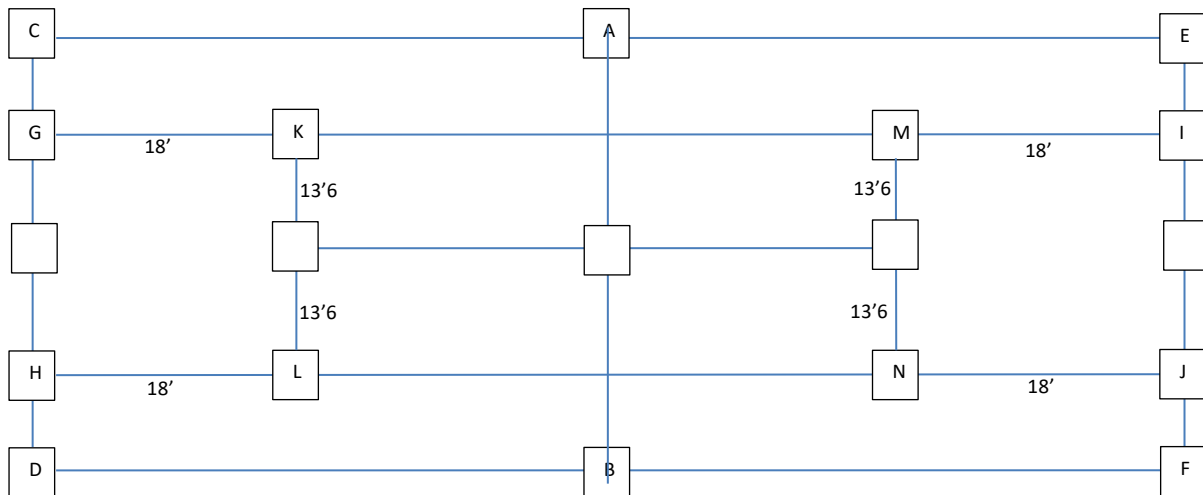
- Once all four pegs are in place, tie them together with string to create a rectangle. This marks the doubles side lines (long sides) and baselines (short lines).
- Measure 4 foot 6 inches from pegs C, D, E and F along each baseline and push pegs into the ground. We'll call these pegs G, H, I and J - they mark the singles side lines. Tie two strings to connect them so they run parallel to the doubles side lines.



- Measure 18 feet from pegs G, H, I and J along each singles side line and push pegs into the ground. We'll call these pegs K, L, M and N - they mark the service lines. Tie two strings to connect them so they run parallel to the base lines, these are the service lines.



- The service lines should each measure 27 feet. Push a peg into the mid-point (13 foot 6 inches) on each line. Connect these two last pins with a piece of string.
- Finally return to the baselines (which should each measure 36 feet long) and place a peg into the mid-point (18 feet) on each line. These are the centre marks.



The court is now ready to be lined and should look like the diagram below. The lines should be painted so that the string is on the outside of each line, apart from the centre service line and centre marks where the string should be in the middle of the line. The centre marks each need to be approximately 4 inches long.

